



# OMEEO REGION NEWS SHEET

SUPPORTED BY



Wednesday 9 October 2024

AN OMEOSHIRE LIONS CLUB PROJECT

20 Cents

SERVING ENSAY, SWIFTS CREEK, OMEEO. BENAMBRA, DINNER PLAIN.

### NEWSHEET ENQUIRIES:

Email: [newsheet@omeo.org.au](mailto:newsheet@omeo.org.au)

Phone : 5159 1515 ..... [www.omeo.org.au](http://www.omeo.org.au)

Post: P.O. Box 182 Omeo 3898

### Medical Services-Omeo Region

For **URGENT** Medical Care call **000**

Omeo Medical Centre

Please Phone: **51 590 140**

To arrange an appointment

**Monday to Friday 8.00am—5.00pm**

**Pathology:** Collection Monday to Friday

8.00 am—9.00am

*by appointment only*

### OMEEO COMMUNITY HUB

#### LUCKY NUMBERS

26. Missy Morgan ..

41. Leonie & Pat ( Bakery )

#### SNAPDRAGONS JOKE

Welcome to Daylight Saving



### Omeo Weather



Wed 18-4. Thurs 21-4. Frid 18-3, Sat 17-1  
Sun 19-6. Mon 18-3. Tues 17-4. Wed 21-10

## District Diary

### Wednesday 9th October

**Omeo to Bright Bus..departs Omeo 8.00am return 3.20pm**

Lego Club Omeo Library.....3.30pm-4.30pm

Swifts Creek Bush Nurse A.G.M. .... 5.30pm

### Thursday 10th October

Omeo Opportunity Shop Open..... 11.00am-3.00pm

Omeo Service Centre – **Closed.....9:00am – 5:00pm**

### Friday 11th October

**Omeo to Bright Bus...departs Omeo 8.00am return 3.20pm**

School Holiday Movie Omeo Library.....2.00pm-4.00pm

### Saturday 12th October

AA. meeting 1<sup>st</sup> Saturday of month, CFA rooms .....2.00pm

Omeo Opportunity Shop Open..... 11.00am-3.00pm

### Sunday 13th October

Anglican Church Benambra .....9.30 am

Catholic Prayer Meeting Omeo..... 9.00am

Winter Golf Comp .....12.00pm

### Monday 14th October

**Omeo to Bright Bus depart....Omeo 8.00am return 3.20pm**

The High Country Singers Omeo Shire Offices.....2-3.30 pm

### Tuesday 15th October

Listen with Lorna live radio O.S.C.A.R. fm ... 12.00-2.00pm

Monthly Movie Screening Omeo Library ...2.00pm—4.00pm

**NB.** Never go to a doctor whose office plants have died

**Amicus.**



### *Medical Centre*

*Charles Luiz & Howard Goldenberg*

*Please note some days are via telehealth*

*Phone:5159 0140*



**Darren Chester**  
Federal Member for Gippsland



**Shopping  
Locally**

Creates Local Jobs  
#lovegippsland

1300 131 785

[www.darrenchester.com](http://www.darrenchester.com)



186 Day Avenue. Omeo. 3898

PH: 03 51591663

FAX: 03 5159 1686

**AFTER HOURS: 0474 017 705**

EMAIL: [omeopharmacy@gmail.com](mailto:omeopharmacy@gmail.com)

DELIVERY AVAILABLE

R.E.C. 17886  
**MITCHELL**  
**Electrical Services**

**INDUSTRIAL & DOMESTIC  
ELECTRICAL MOTOR REPAIRS**

CONTACT: TOM MITCHELL

**5157 3200 & 0428 573 205**

*"From The Lakes To The Alps"*



**UNITING CHURCH**

**AUSTRALIA SWIFTS CREEK**

We gather on the **first Sunday of the month**  
at 10 am for Worship  
and morning tea afterwards.

All are welcome

Activities for the younger ones  
Enquiries to Rev Marian Bisset

**Ph: 0421 067 212**

**GARY'S TREE LOPPING**

- Tree Lopping
- Stump Grinding
- Hedge Trimming



**PH 0427 772 364**

[garysmaintenance@gmail.com](mailto:garysmaintenance@gmail.com)

**Skicom Mt Hotham**

CARPET/UPHOLSTERY/MATTRESS CLEANING SERVICE

Scott DeVries

0429 723 274

[scottdevries2@icloud.com](mailto:scottdevries2@icloud.com)



STUBBORN DIRT, GRIT, STAINS, PET ODOUR, ALLERGENS... BE GONE!



**NOTICE OF AGM**

Omeo Golf Club will hold their  
AGM earlier than previously.

**Wednesday 9th October**

Following twilight golf, 7pm.

See you there!



**Omeo Rodeo  
AGM.**

23/10/2024 at

7pm at

The Hub, Omeo.

All welcome.



**Daily Services between  
Melbourne - Bairnsdale - Omeo**  
**Bairnsdale Depot** - Grinters Transport,  
 16 Lawless Street, Bairnsdale, 3875  
**Melbourne Depot** - Vic Freight Specialists, 13B,  
 13-17 Progress Street, Dandenong, 3175  
**Omeo Depot** – Omeo Welding & Engineering &  
 Equipment Hire, 87 Bilton Street, Omeo, 3898  
 Phone: (03) 5152 5778 Fax: (03) 5152 3329  
 Mobile: 0418 516 857 Email:  
 admin@grinters.com.au  
 Pallets . Parcels .  
 ♦ Livestock . Hay .  
 ♦ Machinery . Bulk  
 ♦ General . Wool  
 ♦ Refrigerated Freight . Farm Equipment  
**Leaves 9.30am from Bairnsdale to Omeo**



**Jens and Maureen Hudson**

18 Great Alpine Road Lucknow 3875  
 Phone : Maureen 0402 001 593  
 Jens 0402 006 268

Many fabrics to choose from for all your  
 furnishing needs Over thirty years in  
 Business and 76 years' experience in the  
 industry, between us we can help you.

Including car and motorbike seats

- Car roof linings replaced
- Cushions made to size
- Foam cut to size
- Toyota Land Cruiser seat foams



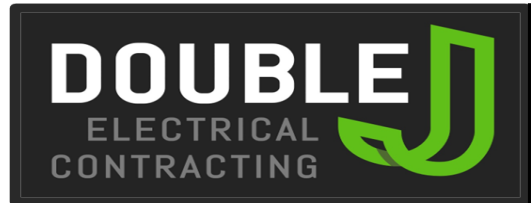
- Groceries
- Meat
- Fruit & Veg
- Gas Bottles
- Bottle Shop
- Post Office
- Fuel ULP & DSL + Winter Mix
- Breakfast & Lunch Daily until 2pm
- Fish & Chips - Friday Nights 4pm-7pm
- Eat In or Take Away
- Personalised Weekly Orders of Meat, Fruit & Vegetables

Drop in and meet our awesome team to grab a  
 bite to eat or stock up on supplies for your  
 adventure around Sunny Benambra

**TRADING HOURS**

Weekdays 8am - 5:30pm  
 Weekends 9am - 5pm  
 Public Holidays 9am - 5pm

**03 5159 9209**



Bore pumps Sales and servicing,  
 Mains and solar operated

TV Installation and servicing of both  
 Satellite & "Terry"

Generator - Sales/Hire/Installation/

Mains to Generator  
 changeover switches and inlets

Electrical Appliance Repairs/Maintenance

Electrical Installations  
 Industrial to domestic..

Competitive rates  
 and servicing the Omeo region

**Contact Jeremiah on 0418 909 978**

**Switch all  
paper  
products in  
your life to  
100% recycled**



**Did You Know?**

Toilet paper, printing paper and almost all other paper products are available as recycled options.

For more information contact Council or visit our A – Z - Where to next? on our website.



**EAST GIPPSLAND  
SHIRE LIBRARIES**



# LEGO Club 2024



**Junior LEGO enthusiasts are invited to attend our after- LEGO Club school sessions.**

The sessions incorporate freestyle activity and themed construction activities.

**Donations Welcome**

The library will gladly accept donations of old or new LEGO brand pieces for our LEGO Club collection.

For more information, phone **51524225** or ask in person at the library about these **FREE** sessions.

**Omeo Service Centre**

3.30pm-4.30pm

Every Wednesday

*Except School Holidays*



**All Children must be accompanied by an adult**

**ALL SCREENS GIPPSLAND**  
SALES - SERVICE - REPAIRS

**GLASS & GLAZING –  
WINDOW REPLACEMENTS**

– SHOWER SCREENS – ROBE DOORS –  
SECURITY DOORS – FLY SCREENS &  
MORE

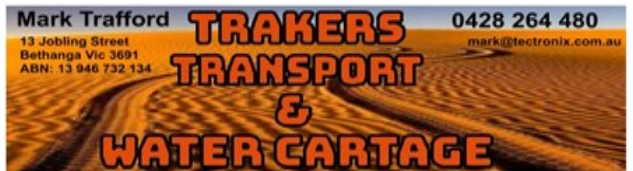
Servicing - Ensay, Swift Creek, Omeo,  
Benambra & Dinner Plain

**OFFICE: 5152 6791**

JUSTIN: 0457 775 168

[emailsales@allscreensgippsland.com.au](mailto:emailsales@allscreensgippsland.com.au)

[www.allscreensgippsland.com.au](http://www.allscreensgippsland.com.au)



Specialising in the following services  
Potable Water Cartage

Transport of general freight, Agricultural goods,  
Motorbikes, Quad bikes, Mowers  
Small tractors, SXS's, Machinery parts,  
Bagged grain and much more.

Reasonable rates

Truck equipped with 1,000 KG. tailgate loader  
Full tarpaulin if required,  
ability to load and unload goods  
with 1.6 tonne all terrain pallet jack.  
Truck capabilities: 6.tonne, 4x4  
Tray size: 5.5 mtrs x 2.4 mtrs.  
Flat top trailer 6.3 mtr x 2.5 mtr

Transporting weekly to Omeo and district  
from Albury/Wodonga Corryong  
Orders phoned or emailed by Tuesday  
11 am For delivery on Wednesdays

Contact Mark for delivery charges on  
**0428 264 480**

Mark @tectronix.com.au



## Tech Savvy Workshop

### Introduction to Android



#### Learn the basics of your Android device!

This workshop provides a basic introduction for those new to Android devices and will cover the following: What a tablet / smartphone is, what they can do, different brands / types, device buttons and controls, using the touch screen, navigating your device, and common symbols. It is suitable for tablet or smartphone users.

**Disclaimer:** This workshop is designed for those who are looking to get a device or who have just got one.



Libraries  
Change Lives

Omeo Service Centre  
Monday 21 October 9.30am-12.00pm  
Book Now at your Library: 5152 4225



## Tech Savvy Workshop

### Introduction to Apple



#### Learn the basics of your Apple device!

This workshop provides a basic introduction for those new to Apple devices and will cover the following: What an iPad/iPhone is, what they can do, different types, device buttons/controls, using the touch screen, navigating your device, and common symbols. It is suitable for iPad or iPhone users.

**Disclaimer:** This workshop is designed for devices running iOS software but is not suitable for Apple Mac users. This workshop is designed for those who are considering purchasing or have recently acquired an Apple device.



Libraries  
Change Lives

Omeo Service Centre  
Monday 28 October 9.30am-12.00pm  
Book Now at your Library: 5152 4225

# NEW RUSH BREWHOUSE

Phone :5159 1276

## Opening Hours

Friday from 5pm  
Sunday Breakfast 8am 12pm  
Sunday Lunch 12- 2pm



## OMEO RSL



### Notice of Annual General Meeting

**Wednesday 6 November 2024**

**@ 11:00am**, Omeo Shire Office

Nominations for Committee members  
are now open

All positions will be declared vacant

New Service and Affiliate Members  
are most welcome

For general enquiries contact  
Renee on ..... **0468 499 295**



The Omeo & District Agricultural & Pastoral Society Inc. invites you to attend



## Floral Art & Cookery Workshops

All welcome to this fun and free event

Are you exhibiting in an Agricultural Show this year? Do you want to find out what the judges are looking for? Learn and share some tips and tricks on how to present the best bunch of flowers and/or how to prepare and present your cookery items so they taste the best.

Our guest speakers are Show Judges and Show enthusiasts, Judi Sykes and Maree Campbell as well as our local ladies. Bring some foliage (on Wednesday) or a jam & cookery item (on Saturday) for discussion, feedback and fun. All other equipment supplied.



### Floral Art Workshop

**Wednesday 16<sup>th</sup> October \*NOTE CHANGE OF DATE\* 12:00pm – 4:30pm \***

To be held at the Omeo Recreation Reserve Pavilion

&

### Cookery, Preserves & Jams Workshop

**Saturday 26<sup>th</sup> October 12:00pm – 4:30pm**

To be held at the Omeo Recreation Reserve Pavilion



**Lunch Included. Registration & information:** Lisa Lee, ODAPS Secretary E: [omeoshowsec@gmail.com](mailto:omeoshowsec@gmail.com) P: 0499 192 722  
[www.omeoshow.com.au](http://www.omeoshow.com.au) Facebook: Omeo Show 2024. Hosted by the Omeo & District Agricultural & Pastoral Society and supported by the Foundation for Rural & Regional Renewal/FRRR & the Omeo Garden Club.



SWIFTS CREEK BUSH NURSING CENTRE INC.

ABN: 78 513 040 891 INCORPORATION No A0011271F

### ANNUAL GENERAL MEETING

**When:** Wednesday 9th October 2024 @ 5.30pm

**Where:** Interested parties may participate in the AGM in person at the Swifts Creek Bush Nurse Centre or Via video

conference on Zoom. If you require the Zoom link please contact the centre.

#### Committee members for renomination

Pauline Canfield -renominating

Michael Cawley -renominating

#### Committee member vacancies:

No vacancies at this time

RSVP please Contact: Bush Nursing Centre: 03 5159 4210 or the

SCBNC email: [Secretary.scbnc@gmail.com](mailto:Secretary.scbnc@gmail.com) for access to the Zoom link.

## FLYCO GIPPSLAND

SICK OF THOSE ANNOYING FLIES & SPIDERS HANGING AROUND YOUR HOME OR BUSINESS? LET US GET RID OF THEM FOR YOU!

WE ARE COMING YOUR WAY... VISITING ENSAY, SWIFTS CREEK, OMEO, BENAMBRA AND EVERY WHERE IN BETWEEN.

MONDAY 28/10 TO FRIDAY 1/11/24

To book call 1300 88 44 22



*Locally owned & operated where customer service & satisfaction are our highest priority*



**PHYSIOTHERAPIST**

**Robert Hughes is a qualified and extremely experienced Physiotherapist from McMillan Chiropractic**

**Robert will be available at Swifts Creek Bush Nursing Centre 16<sup>th</sup> October & 13th November 2024**

**FOR APPOINTMENTS Please phone 5150 2430 NO GP Referral required.**



**SWIFTS CREEK BUSH NURSING CENTRE**

T. 03 5150 2430 F. 03 5150 2439  
Email. [susan.carroll@gha.net.au](mailto:susan.carroll@gha.net.au)

17 McMillan Street, Swifts Creek 3896  
Open 9am until 5pm Monday to Friday  
9am until 11am Weekends

Emergency on-call available after hours  
Nursing services: No appointment required.

You are required to pay an annual membership fee or otherwise a non-member fee.

A Rural and Isolated Practice Nurse is available for wound infections.

Assistance with Virtual Emergency consults.

Pathology: Every Weekday, 9am until 9.45am

Women's Health

Ante/Postnatal Care

Suturing

Memberships

Family \$140, Single \$70 due 31<sup>st</sup> July each year

Hire of Equipment

Home visits if required.

24hr Bp monitor

Immunisations

Webpage – [https://](https://www.swiftscreekbushnursingcentre.com.au)

[www.swiftscreekbushnursingcentre.com.au](https://www.swiftscreekbushnursingcentre.com.au)



**Ensay Bush Nursing Centre**

T. 03 5150 2416 F. 03 5150 2419 email: [ensaybnc@gha.net.au](mailto:ensaybnc@gha.net.au)

Open 9am until 3pm Monday to Friday

or 8.30am-9am and 3-3.30pm emergencies only

Nursing services: No cost No appointment required.

Pathology Monday to Friday 9 am until 10.30 am- No cost. No appointment required

Footcare: Approximately 6 weekly, \$15.00 cost ring for an appointment

Walk and morning tea: 1<sup>st</sup> Friday of each month may include some craft activities, no cost only delicious homemade cakes etc.

RFDS mental wellbeing: Fortnightly face to face and telehealth model.

Memberships: \$50.00 family and \$25.00 single due 31<sup>st</sup> of July each year, pro-rata payments accepted for new members.

AGM: Occurs on the second Monday of October all welcome, new members to the COM welcome.

Follow us on facebook and our webpage for events and employment opportunities.

WEBPAGE

<https://www.ensaybushnursing.com.au>



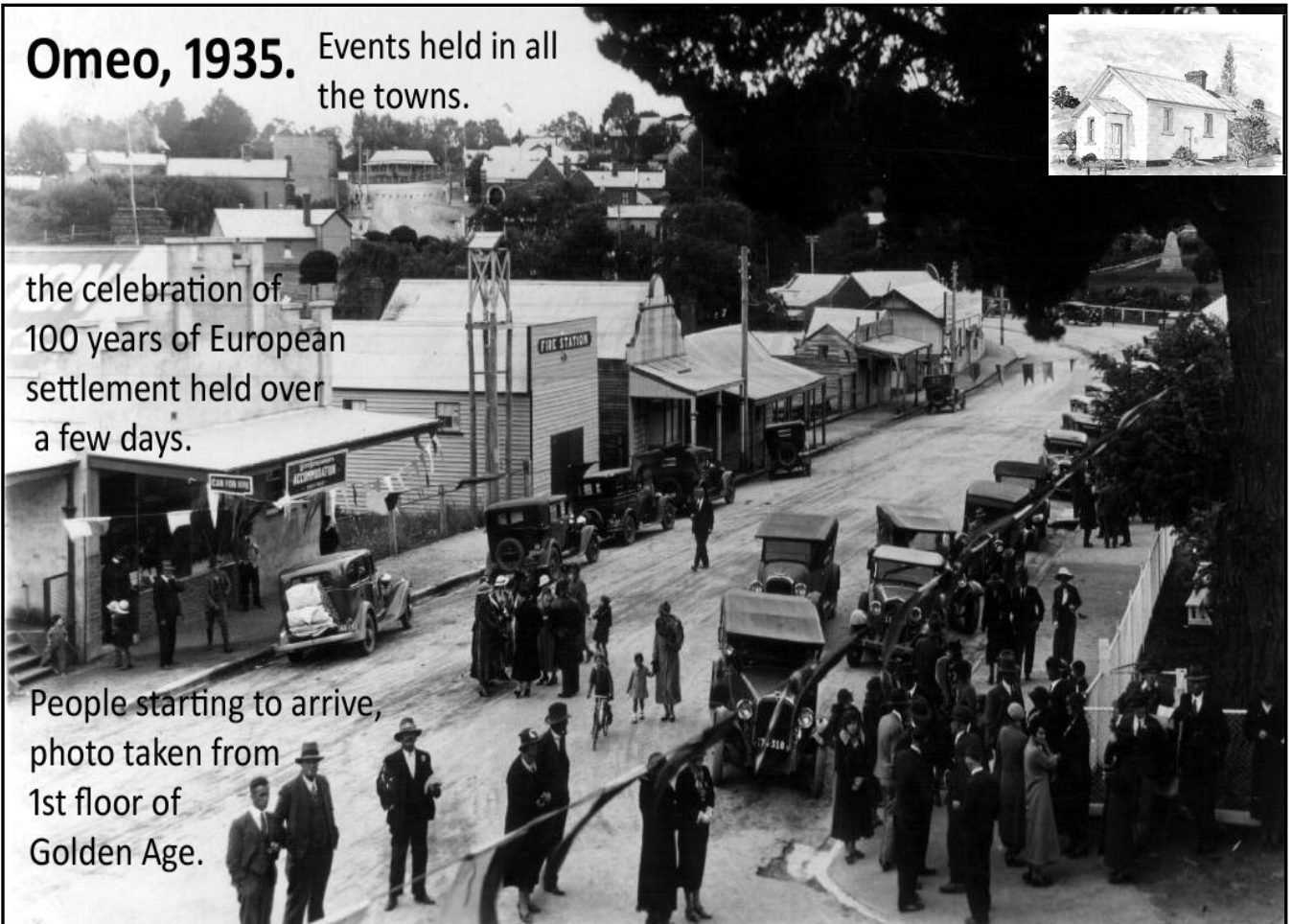
**5 Great Alpine Road  
Ensay, VIC. 3895**

**Omeo, 1935.** Events held in all the towns.



the celebration of 100 years of European settlement held over a few days.

People starting to arrive, photo taken from 1st floor of Golden Age.



**Golf Club Results Sunday 6/10/2024**



**18-hole stableford**

**Open to all members & casuals welcome**

**12.30pm for 1pm hit off.....*same next Sunday 13/10/2024***

<b><u>Place</u></b>	<b><u>Points</u></b>	<b><u>Player Name</u></b>
Winner	33	Dean Jobling
2 <sup>nd</sup>	30	Pat McCormack
3 <sup>rd</sup>	29	John Reid
NAGA	19	Walter Bower

Nearest to Pin 7<sup>th</sup>

Nearest to Pin 16<sup>th</sup>

Nearest to Pin 2<sup>nd</sup> shot 6<sup>th</sup>/15<sup>th</sup>



Steve Thomas

-

Dean Jobling

**AGM Wednesday 9<sup>th</sup> October 7pm after Twilight Golf**



Thank you to everyone who was able to attend my 90th birthday party and helped make it a huge success.

I am very grateful for all the birthday wishes and presents I received.

A big thank you to Carol, Sharna, Brylee, and Anette for all their help and to Kaila for my beautiful cake.



Country Women's Association of Victoria Inc.  
High Country Branch

## 2025 Scholarship

The branch is proud to announce the High Country Branch \$3000 Scholarship to assist with ongoing education.

Eligible applicants will be year 10 and above school leavers from the local community.

You can request further information and an application form by contacting:

Rev. Marian Bisset  
0421 067 212

or by contacting the branch through social media.

Applications due: 21st October, 2024

 [cwahighcountry](https://www.facebook.com/cwahighcountry)



# WOODLANDS FIREWORKS MONDAY, 4 NOVEMBER 2024

**HOLLONDS/O'BRIENS ROAD, SWIFTS CREEK - 5KM NORTH OF SWIFTS CREEK**

**FREE ENTRY / LIVE MUSIC / PARKING AND CAMPING ONSITE**

**CATERING BY SWIFTS CREEK FOOTBALL AND NETBALL CLUB**



*You're  
invited*

Please join us to celebrate the launch of  
**Study Hub Omeo**

A site of the Gippsland East Study Hub Outreach.  
A partnership between the  
Gippsland east Local Learning and Employment Network  
And the Omeo Community Hub and Hall

**9 October 2024, 12:00pm**  
179 Day Avenue  
Omeo



Please RSVP  
By 7 October 2024  
Via the QR code or at  
<https://www.trybookong.com/CVPB>



Now on Saturdays

# HARVEST EXCHANGE CALENDAR 2024-2025



2024	
<b>SATURDAY 5 OCTOBER</b> ENSAY Little River Inn	<b>SATURDAY 19 OCTOBER</b> SWIFTS CREEK Community Centre
<b>SATURDAY 2 NOVEMBER</b> OMELO Courthouse Gardens	<b>SATURDAY 16 NOVEMBER</b> BENAMBRA Neighbourhood House
<b>SATURDAY 30 NOVEMBER</b> ENSAY Little River Inn	<b>SATURDAY 14 DECEMBER</b> SWIFTS CREEK Community Centre
2025	
<b>SATURDAY 18 JANUARY</b> OMELO Court House Gardens	<b>SATURDAY 1 FEBRUARY</b> BENAMBRA Neighbourhood House
<b>SATURDAY 15 FEBRUARY</b> ENSAY Little River Inn	<b>SATURDAY 1 MARCH</b> SWIFTS CREEK Community Centre
<b>SATURDAY 15 MARCH</b> OMELO Court House Gardens	<b>SATURDAY 29 MARCH</b> BENAMBRA Neighbourhood House
<b>SATURDAY 5 APRIL</b> ENSAY Little River Inn	<b>SATURDAY 19 APRIL</b> SWIFTS CREEK Community Centre
<b>SATURDAY 3 MAY</b> OMELO Court House Gardens	<b>SATURDAY 17 MAY</b> BENAMBRA Neighbourhood House

## **SATURDAYS AS PER TIMETABLE**

### **10:30am - Register Produce**

Register your produce  
and place it on the table

**11am - Swap and share**  
Take what you like, share  
and chat

### **11:30am - Excess for Everyone**

Leftover produce is  
shared around or taken  
home

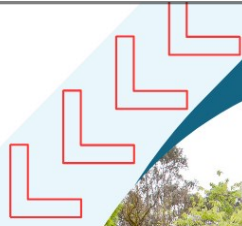
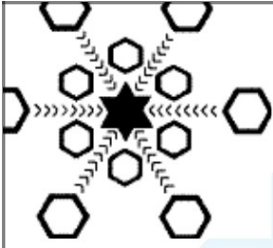
### **WHAT TO BRING**

Fresh fruit and veges,  
eggs, honey, homemade  
preserves, baked goods,  
seedlings, empty jam jars,  
empty egg cartons, your  
favourite recipe or  
gardening tips.

Nothing to bring?  
Come along anyway....  
Growers love to share!

See the Harvest Exchange Guidelines here: <http://tinyurl.com/HarvestExchange> or  
contact the Community Centre Swifts Creek for more info:

E: [ccswiftscreek@gmail.com](mailto:ccswiftscreek@gmail.com) T: 0491 697 298



# 150th Celebrations

1874-2024

**SWIFTS CREEK P-12  
FLAGSTAFF CAMPUS**

**NOVEMBER 9TH 2024  
10-2PM**

COME CELEBRATE WITH US

SHARE YOUR STORIES ON  
OUR LIVE PODCAST

[swifts.creek.pl2@education.vic.gov.au](mailto:swifts.creek.pl2@education.vic.gov.au)

*Cassilis Makers Market*

*School Tours & Historical Displays*

*Picnic Marquee Lunch provided*

*Kids Entertainment*

*Ceremonial Tree Planting*

*Celebratory Cake Cutting*



## Congratulations Grace, Luke, Lorinda & Demi.

Here's another reason to get your exhibits ready for the 2024 Omeo & District Show on the 15<sup>th</sup>, 16<sup>th</sup> & 17<sup>th</sup> of November. Four Omeo & District Show exhibitors and their exhibits made it to the Royal Melbourne Show and Victorian Agricultural Show (VAS) Convention judging!

One local was most thrilled to have won the **Victorian Carrot Cake Competition**. Omeo's own Mrs Grace Fitzgerald entered the VAS Carrot Cake Competition at the 2023 Omeo Show and after winning there, she baked another cake for the Gippsland Group judging then baked again for State judging in 2024 WHICH GRACE WON! There is now, no doubting Grace's abilities !

Grace told us "I am proud to have received this award. I didn't expect it at all. I do a lot of cooking for our shearers and now they will probably expect a Carrot Cake for smoko! I enjoy being part of Agricultural Shows as they provide a place for us to share our skills and expertise".



The **Junior Carrot & Date Muffins State Finalist Luke Bowd, placed second** Luke is a regular entrant at the Omeo & District Show and like Grace, had to bake over and over again to get that far.

**Lorinda Whittington's sewing and Demi King's photograph** both made it to the 2024 Royal Melbourne Show for judging against other Show winners. Whilst they did not win, their exhibits were on display for all to see. Well done!

This is no mean feat considering that they've all competed against dozens at the local level, 60 at the Gippsland Level then many Victorian finalists.

Keep an eye out for the VAS categories at our show this year. You too could be headed for the Royal Melbourne Show or the VAS Convention.

There are also hundreds of other classes to enter and have a bit of fun at.

Our Gippsland Agricultural Shows start soon with:

Maffra Show on October 25-27,

Sale Show on November 1-3,

Bairnsdale Show on November 9,

**Omeo & District Show on November 15-17**

Yarram Show on November 23-24 and

Orbost Show on March 10, 2025.



Head to [www.omeoshow.com.au](http://www.omeoshow.com.au) to download your Omeo & District Show Schedule or grab a copy at a local shop.



*HEY HEY*



*IT'S SATURDAY...*

**16<sup>TH</sup> NOVEMBER 2024!**

## **OMEO & DISTRICT SHOW**

**Quick Shears Friday 15<sup>th</sup>**

**... extra horse events on Sunday 17<sup>th</sup>**

***For all the details go to:***

- [www.omeoshow.com.au](http://www.omeoshow.com.au)
- [Showdayonline.com](http://Showdayonline.com) /Omeo



***For lodging Main Pavilion entries:***

- 5-7 pm Wed 13<sup>th</sup> & Thurs 14<sup>th</sup>, 10am-3pm Friday 15<sup>th</sup>  
*Skip the entry paperwork queues - enter & pay on-line first.*
- Judging of Pavilion entries starts 5pm Friday 15<sup>th</sup>



**Another great Show coming up for Omeo & District.**  
Help make it terrific - be a part of it,



Queries? Contact Lisa Lee Secretary [omeoshowsec@gmail.com](mailto:omeoshowsec@gmail.com) 0499 192 722

Ad 6/10/24